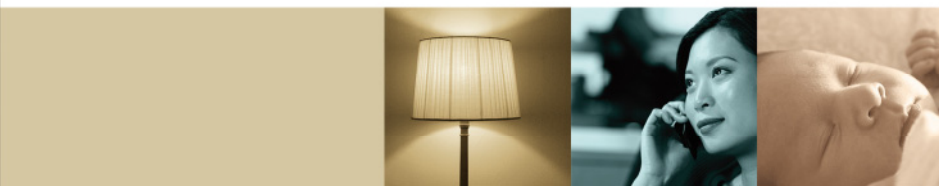




Comfort,
the Intelligent Home System

experience
true comfort





What is Comfort?

Comfort is a practical, affordable, state-of-the-art Intelligent Home/Smart Home System which incorporates the following :-

- An advanced Intruder Alarm System
- A Home Automation system which can control lighting, appliances, heating, and airconditioning in the home
- An Voicemail system with 8 mailboxes
- A Doorphone Intercom system

Why Comfort?

Comfort integrates Home control, voicemail, security, remote control, telephone control into a truly Intelligent Home. The benefits of integration over separate subsystems is that the systems within the home can work together seamlessly to provide convenience, comfort, security and energy saving for the family.

For example,

- when someone comes down the stairs at night, the light can be turned on and turned off when there has been no movement detected for a few minutes.
- when there is a break-in, all the lights in the home can be turned on, or only those in the area where the intrusion was detected.
- when nobody is at home, the lighting, heating or airconditioning can be turned down or turned off, the internal phones can be disabled, and visitors pressing the doorbell can be connected with the users cellular phone.
- Time programs can set temperatures or control lights and curtains in the home at preprogrammed times.

Expandable, with Industry-standard Interfaces

Comfort can be interfaced to a variety of third party systems, like X10, EIB (European Installation Bus), C-Bus, Honeywell Smartfit, Z-Wave, Access control and biometric systems, and supports an open protocol for connection to external systems

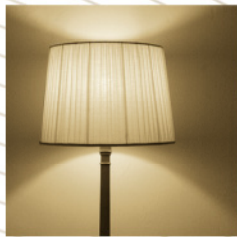
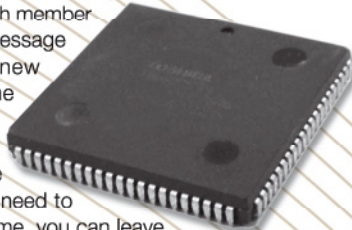


Door Station

When a visitor presses the doorbell, the phones in the home will ring. Talk to visitors from any phone or keypad and press a key to open the door or gate. When nobody is at home, Comfort can call to a mobile phone to allow you to talk to the visitor at the door.

Voicemail

Comfort has an advanced digital answering machine with 8 mailboxes, for each member of the family. Comfort's unique message forwarding facility enables a new message to be forwarded to the recipient's mobile phone. The Auto-erase facility erases the oldest saved message when the mailboxes are full so there is no need to manually erase messages. At home, you can leave messages for any family member using the telephone or keypad. A Message Indicator on the keypad shows where there are new messages in the system.



Lighting Control

Comfort can control lighting in the home using lighting relays, or it can be interfaced to a variety of lighting systems like Clipsal's C-Bus or EIB (European Installation Bus), Ulti, Lutron, Dynalite, Rako. Comfort is able to control X10 devices over the power line (X10 interface needed)

Audio/Video Control

Comfort is able to learn most handheld remote controls for AV systems and send the learned signals to the AV component (eg TV, DVD, Projector etc). The IR control signals can be part of programmed Scenes, eg Movie, Study, Party etc.



Air-conditioning

Comfort is able to control airconditioners using infrared signals. Time Programs can set temperature and fan speeds at any time of the day or night. Current Sensors can monitor the state of the Airconditioner unit to be announced in the Voice Menu



TeleControl

Call home from any telephone to arm your security system, check your appliances, control your hot water, airconditioning or lighting before you return home. Comfort's user-friendly Voice Menu guides you through all operations, and is available in many languages

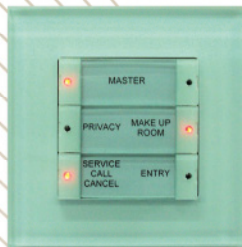


Heating Systems

Comfort can control many types of heating systems, including the Honeywell Smartfit. Temperature sensors can read the room temperature and activate valves and heating controls based on programmable thresholds. Time Programs can set temperatures at programmed times on each day to provide convenience and energy savings.

Curtains

Comfort can control curtains, drapes and awnings through the keypad, telephone or based on Time Programs, light or water sensors.



Scene Control Switches

Comfort's range of Designer Scene Control switches allows control of any scene, available in 4 way 6 way and 8 way versions and in several styles. Matching conventional switches are available to create a common look and feel throughout the whole home.

Remote Control

Use a handheld remote control like the Pronto™ or Harmony™, or the low cost Comfort RC01 to control the whole home. Comfort keypads, the IR Dome, or Scene switches have built-in infrared receivers which read the infrared signal and sends commands to Comfort to control any equipment or scene.



Philips Pronto

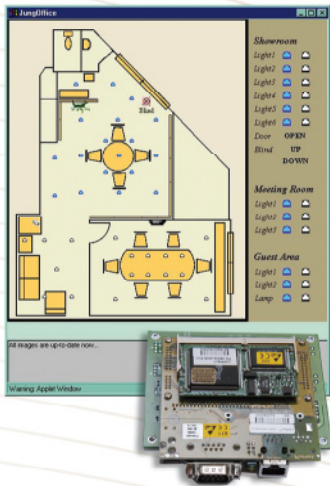


RC01



Harmony 895



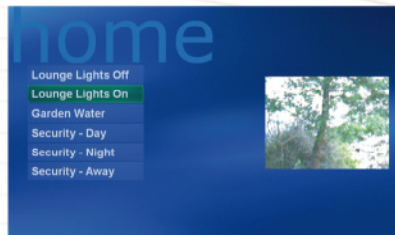


Internet Control

The Comfort Webserver Module allows any computer with a browser to access your home from anywhere in the world. Click on the icons to control any appliance, and as well as monitor the state of appliances and alarm. Access is protected by the user code. See what is happening in the home through network cameras. The webserver module does not depend on a computer to operate.

Keypads and Touchscreens

Comfort's talking keypads can be used to control the home, to record and hear messages, and to intercom with other keypads and door stations. For higher-end properties, a range of monochrome and colour touchscreens are available some of which are able to browse the internet and access Network cameras.



interface while other popular programs like Homeseer have Comfort plug-ins. You can also control Comfort using My Home for Windows Media Centre Edition.

Software Interfaces

Although a PC is not required for operation, there are several options for control from your computer. WizComfort offers a simple user

Time Programs and Reminders

Comfort may be scheduled to perform actions at programmed times of the day and days of the week, like turn on heating and airconditioners, lighting as well as arm and disarm the security system. You can even record Reminder messages to be played back on any keypad or telephone in the home, to remind you to take medicine, to wake up or as warning messages when motion is detected.

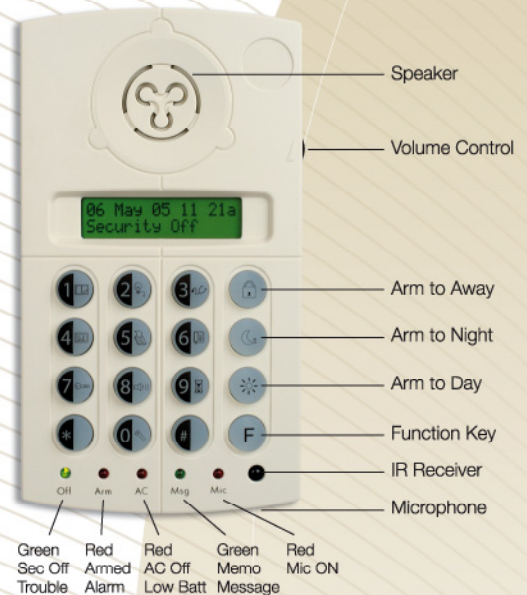


Family Care

For elderly people who are at home alone, a wireless pendant can be programmed to trigger a dial-out to a family member who can talk to the one in distress through any keypad to provide assistance. When there is no activity in the home for an extended period of time, the system can dial out to family members to prompt them to check.

Baby Monitor

Listen for the baby crying from other rooms in the house. The keypad in the baby's room turns on its microphone, working as a Baby Monitor.



Powerful Alarm Functions

Comfort can dial out to 8 telephone numbers including 2 Central Monitoring Stations in the event of an alarm. For mobile phones a Voice message is heard telling what alarm occurred and at which zone. You can hear Alarm History or do real time alarm tracking if the burglar is still moving around in the house, or listen to sounds on any keypad. Besides alarm situations, Comfort can call to inform you that your child has returned home from school, or that there is a power failure, or that there is a new voicemail message. With the GSM Module, Comfort can dial using the GSM network and send SMS messages. Optional fingerprint reader interface also available.

User and Technical Forums at
<http://www.comfortforums.com>

Comfort, the world-proven product

Comfort, now in its second generation, has been installed in many thousands of homes around the world since 1996. Comfort has been type-approved in Europe, Australia, the US, New Zealand, South Africa, China, Singapore, Malaysia.

Represented by

Manufacturer

CYTECH
 Cytech Technology Pte Ltd

55 Ubi Ave 1 #07-04, Singapore 408935
 Tel +65 68469701 Fax +65 68469065
 email: info@cytech.biz
 Web: <http://www.cytech.biz>

UK distributor

CYTECH
 Cytech Europe Ltd

SBC House, Restmor Way
 Wallington, Surrey SM6 7AH, UK
 Tel +44 (0) 845 094 1515
 Email: info-uk@cytech.biz
 Web: <http://cytecheurope.co.uk>